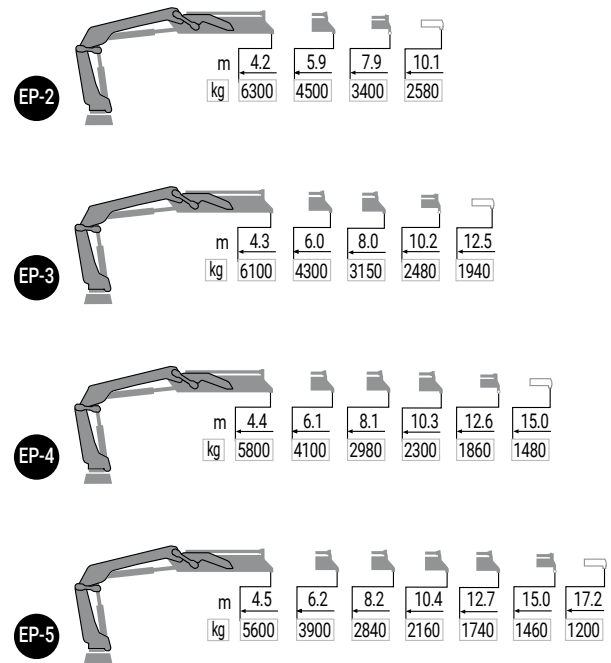
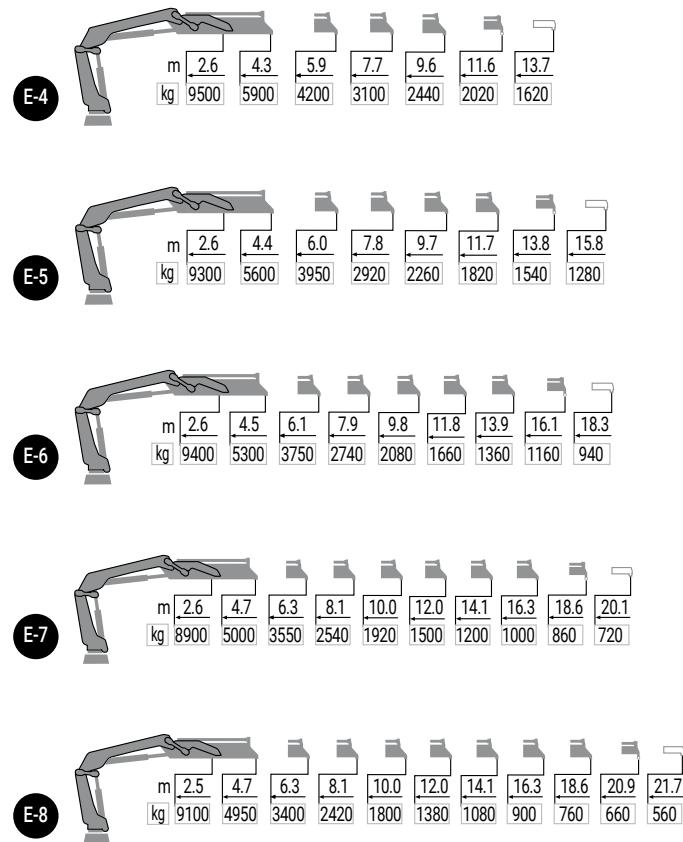


DIAGRAMAS DE CARGA

IX-HIDUO 298



MODEL						
	txm	(°)	mm	mm	mm	kg
E-4	25,3	420	2401	2505	1094	3451
E-5	24,7	420	2401	2505	1154	3631
E-6	24,2	420	2401	2505	1166	3801
E-7	23,8	420	2401	2506	1197	3961
E-8	23,3	420	2401	2508	1200	4081
EP-2	26,7	420	2393	2500	1070	3021
EP-3	26,0	420	2393	2500	1124	3221
EP-4	25,5	420	2392	2500	1153	3391
EP-5	25,1	420	2393	2503	1153	3531