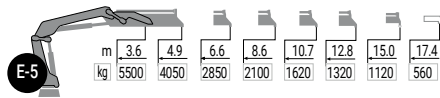
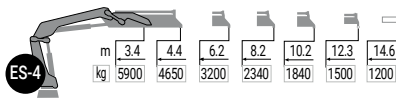
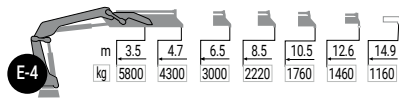
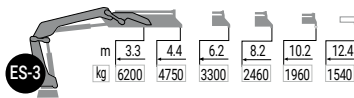
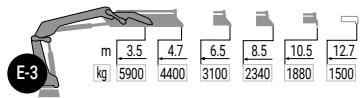
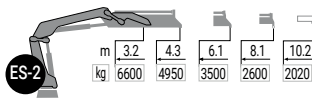
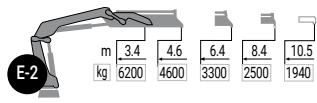


DIAGRAMAS DE CARGA

eX-HIPRO 232



MODEL						
	txm	(°)	mm	mm	mm	kg
E-2	21,3	415	2269	2496	857	2296
E-3	20,7	415	2269	2496	875	2456
E-4	20,3	415	2269	2502	875	2596
E-5	19,8	415	2269	2502	985	2716
E-6	19,4	415	2269	2502	985	2846
ES-2	21,4	415	2269	2496	857	2276
ES-3	20,9	415	2269	2496	875	2436
ES-4	20,4	415	2269	2502	875	2576
ES-5	20,0	415	2269	2502	985	2706
ES-6	19,6	415	2269	2502	985	2826