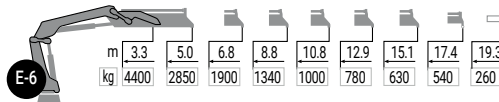
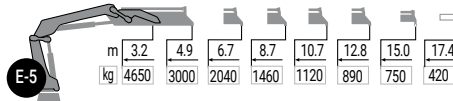
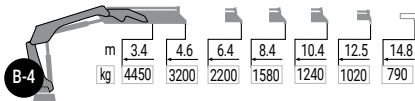
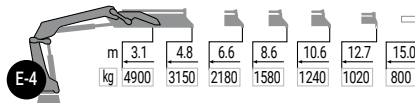
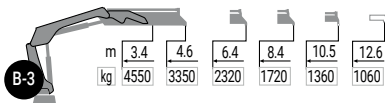
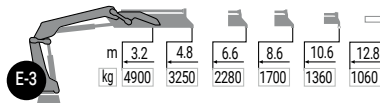
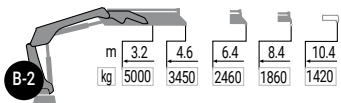
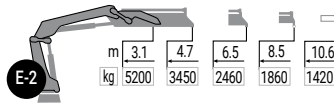
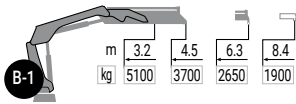




DIAGRAMAS DE CARGA X-CLX 178



MODEL						
	txm	(°)	mm	mm	mm	kg
B-1	16,7	415	2265	2485	865	1881
B-2	16,0	415	2265	2485	965	2031
B-3	15,5	415	2265	2485	950	2201
B-4	15,1	415	2265	2492	965	2341
E-2	16,2	415	2260	2485	865	2161
E-3	15,7	415	2260	2485	965	2321
E-4	15,2	415	2260	2485	965	2461
E-5	14,8	415	2260	2496	965	2601
E-6	14,5	415	2265	2496	965	2721