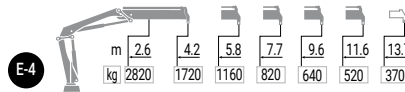
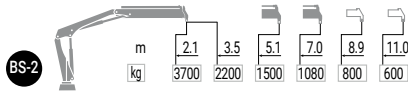
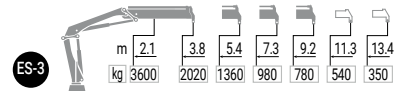
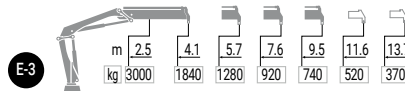
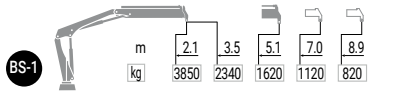
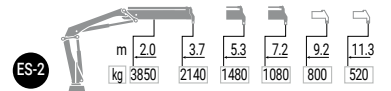
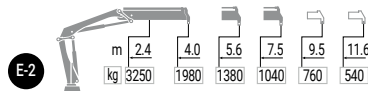
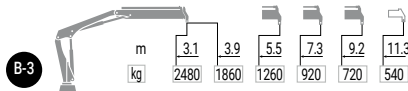
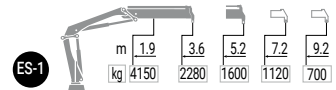
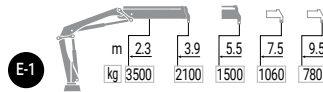
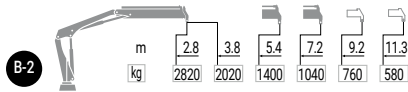
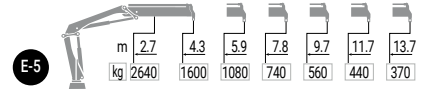
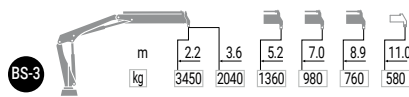
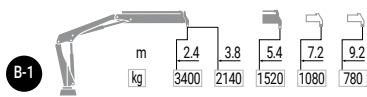




DIAGRAMAS DE CARGA

X-CLX 088



MODEL						
	txm	(°)	mm	mm	mm	kg
B-1	8,2	406	1900	2065	685	970
B-2	8,0	406	1900	2140	685	1080
B-3	7,6	406	1900	2190	765	1170
BS-1	8,3	406	1900	2065	685	960
BS-2	7,9	406	1900	2140	685	1070
BS-3	7,6	406	1900	2190	765	1160
E-1	8,3	406	2000	2020	720	970
E-2	7,9	406	2000	2100	720	1080
E-3	7,5	406	2000	2135	800	1170
E-4	7,3	406	2000	2320	720	1260
E-5	7,1	406	2000	2375	785	1340
ES-1	8,4	406	2000	2020	720	960
ES-2	8,0	406	2000	2100	720	1070
ES-3	7,6	406	2000	2135	800	1160
ES-4	7,3	406	2000	2320	720	1250
ES-5	7,1	406	2000	2375	785	1330