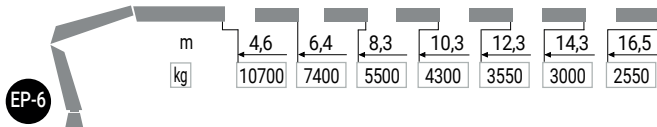
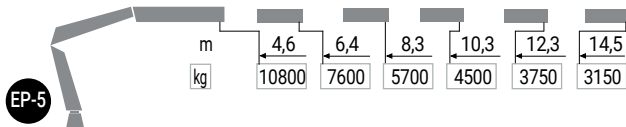
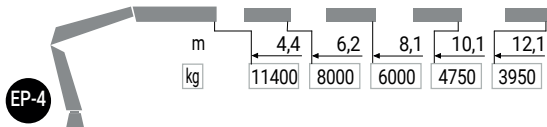
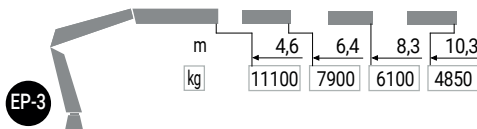
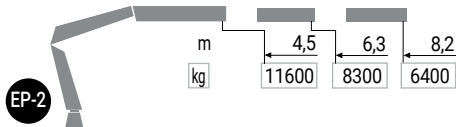




DIAGRAMAS DE CARGA
X-HIPRO 558



MODEL						
	txm	(°)	mm	mm	mm	kg
EP-2	52,3	∞	2488	2546	1467	4564
EP-3	50,9	∞	2488	2546	1467	4814
EP-4	50,1	∞	2488	2546	1467	5002
EP-5	49,6	∞	2488	2546	1467	5215
EP-6	49,2	∞	2555	2546	1525	5458