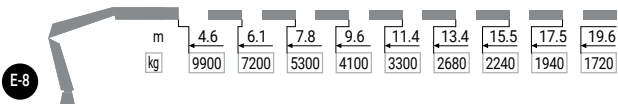
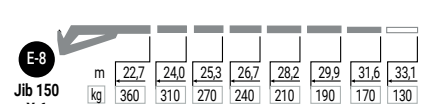
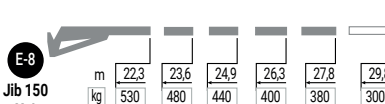
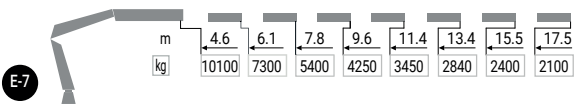
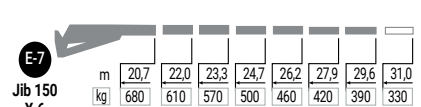
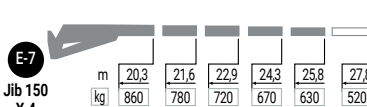
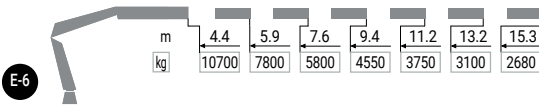
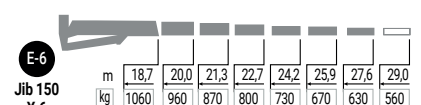
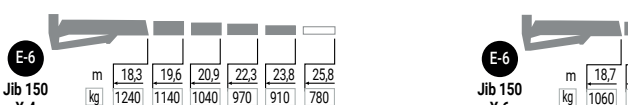
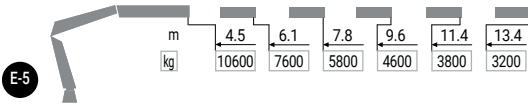
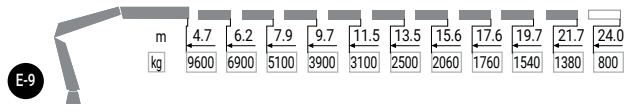
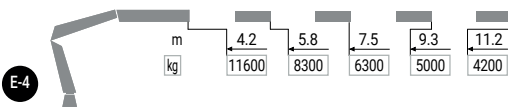


DIAGRAMAS DE CARGA

X-HIPRO 548



MODEL						
	txm	(°)	mm	mm	mm	kg
E-4	48,6	∞	2490	2550	1527	5259
E-5	47,9	∞	2490	2550	1653	5561
E-6	47,1	∞	2490	2550	1653	5745
E-6 JIB 150 X-4	47,1	∞	2642	2526	1758	6958
E-6 JIB 150 X-6	47,1	∞	2642	2526	1758	7127
E-7	46,5	∞	2490	2550	1653	5968
E-7 JIB 150 X-4	46,5	∞	2653	2526	1775	7178
E-7 JIB 150 X-6	46,5	∞	2653	2526	1775	7347
E-8	45,8	∞	2490	2550	1653	6161
E-8 JIB 150 X-4	45,8	∞	2637	2526	1783	7376
E-8 JIB 150 X-6	45,8	∞	2637	2526	1783	7545
E-9	45,3	∞	2490	2548	1698	6342